

MCH APP

Maternal and Child Health Application

www.mchapp.org



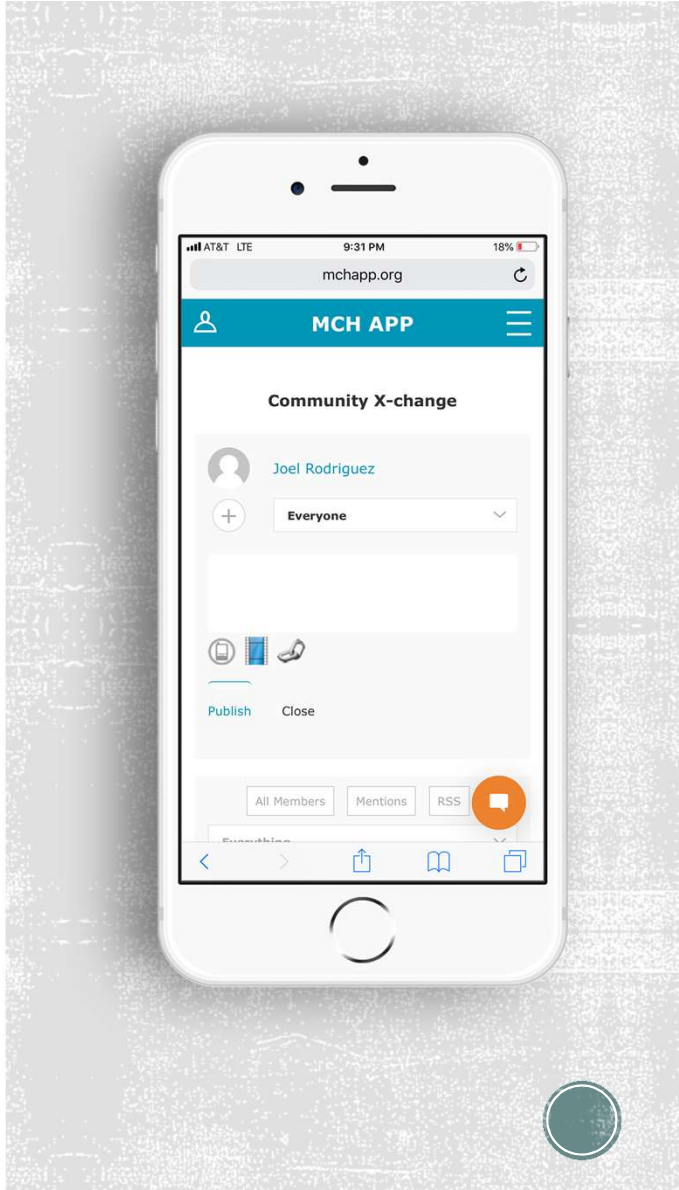
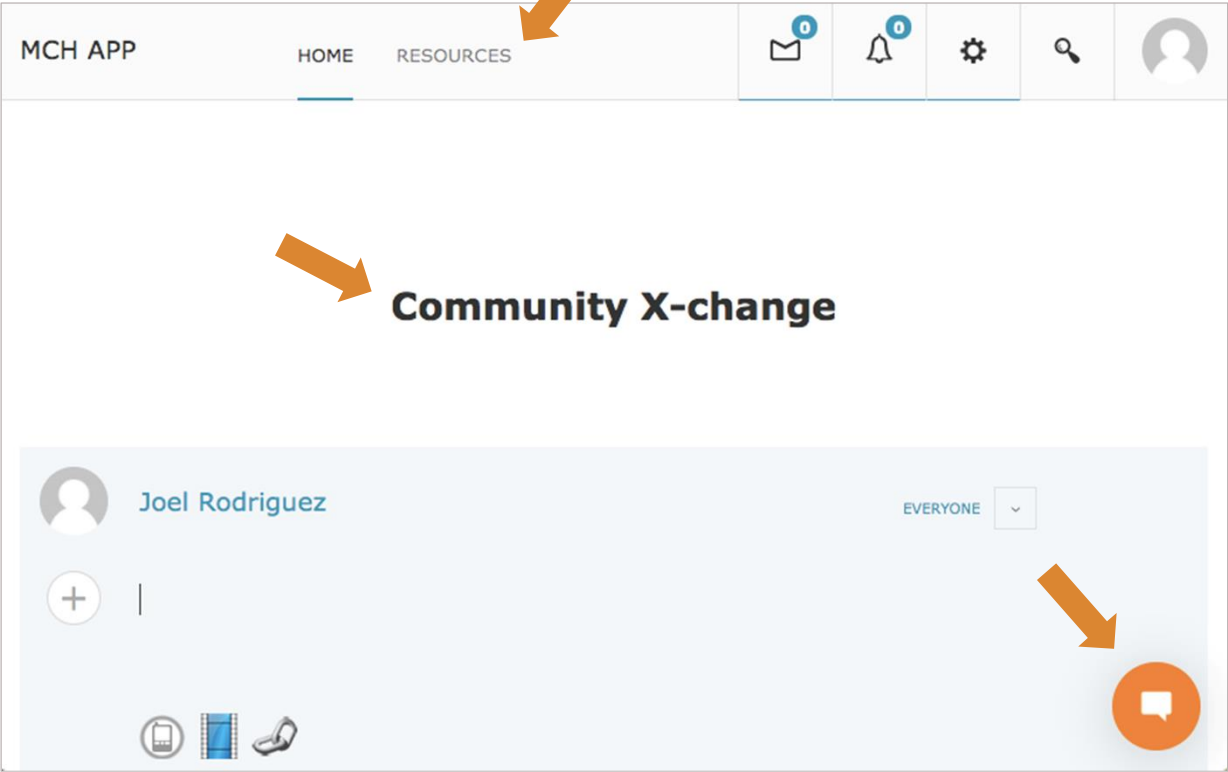
Funding Provided via the ATMCH Innovation in MCH Teaching Award (2018-2019)

What is the MCH app?

The MCH app is a tool developed to provide students completing their field experience with resources and communication at their fingertips.

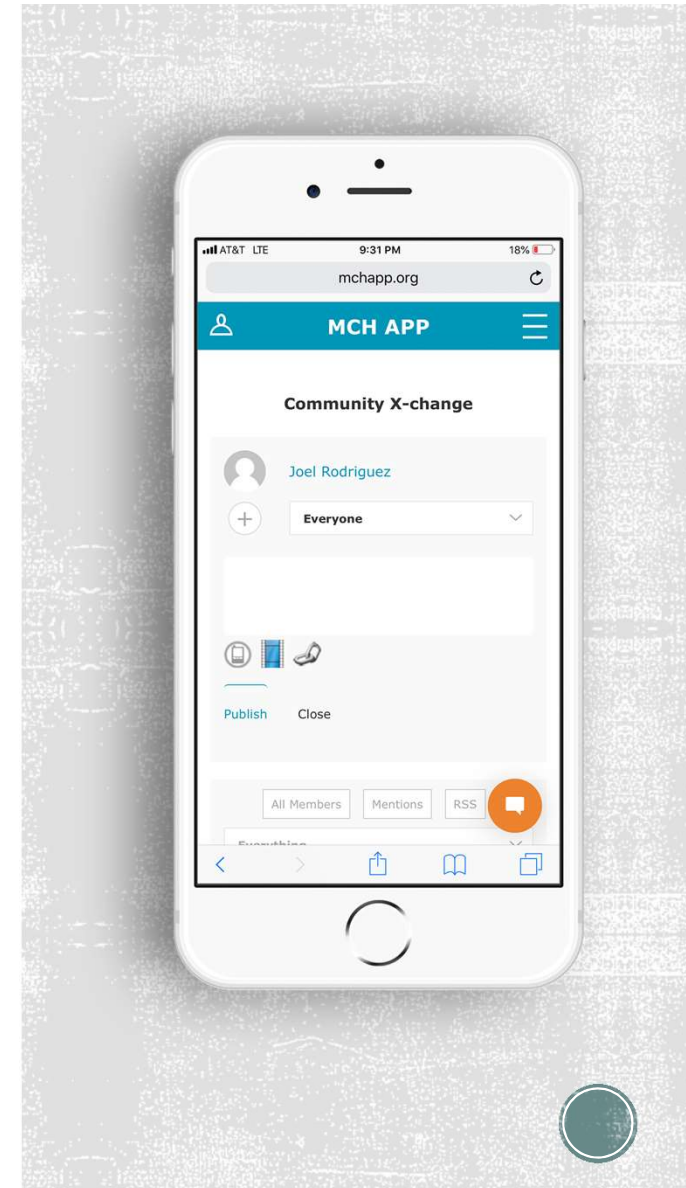


What is the MCH app?

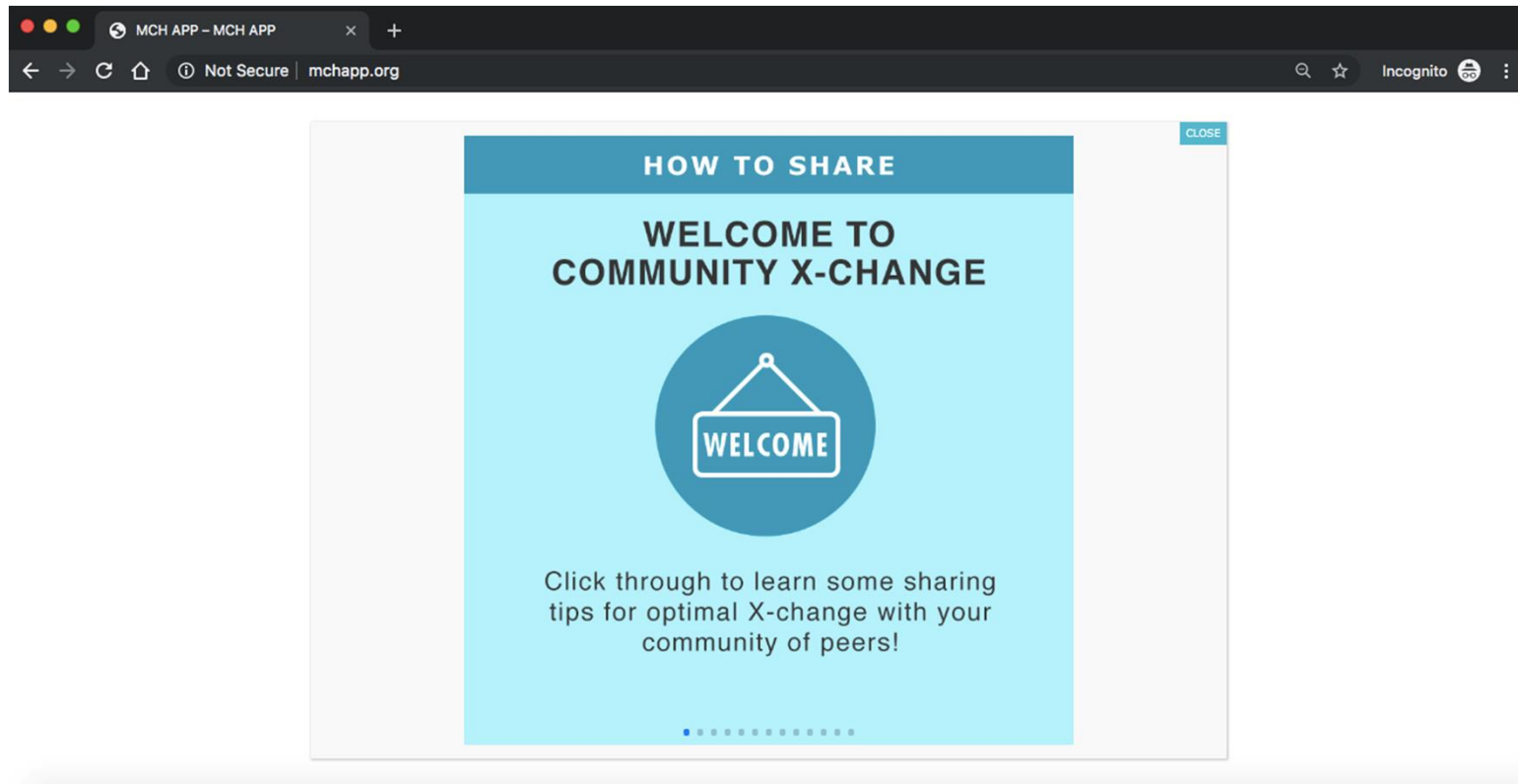


Why use the MCH app?

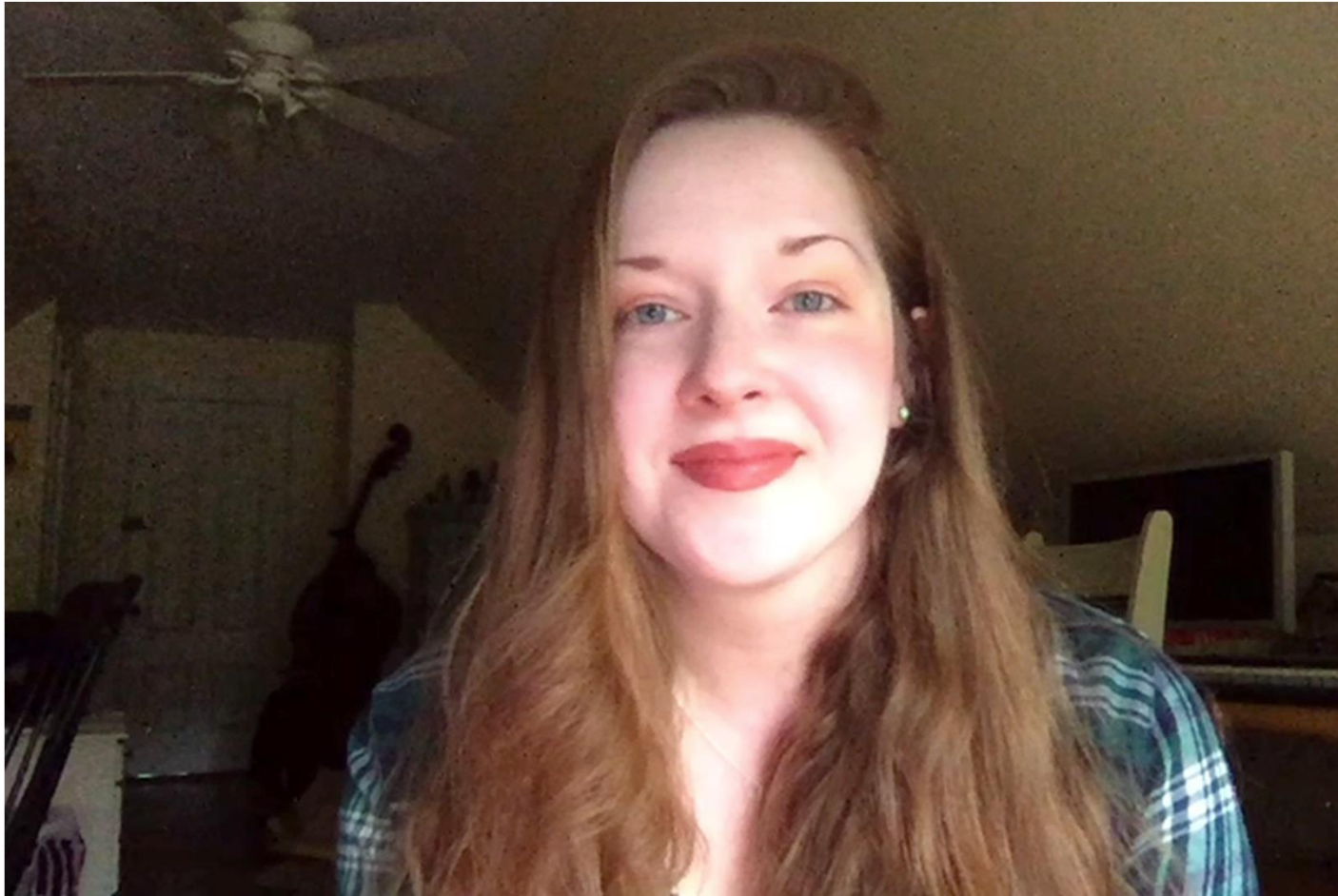
- Opportunity to connect with your colleagues doing similar field visits in different areas
- Collaborative learning experience — teach and learn from each other in a private and professional space
- Able to practice sharing information online in a safe setting and in a professional manner
- Access to various Dornsife Global Scholars Resources
- Access to chat feature for direct contact with Idris

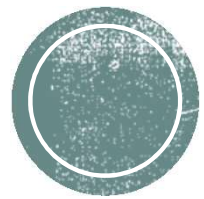


Community X-Change Training



Meet your Community Manager!





Let's check it out!

WEBSITE

www.mchapp.org



Nicole Roberts (Community Manager)
@nbriodyroberts

posted an update



What is one thing you learned today from your project that you think might impact how you will approach a similar situation in your future professional career?



Dornsife Scholar replied



I learned that it is important to be empathetic and build trust with your patients. It can be intimidating for a patient to speak with a medical professional to begin with – by building trust, you will be better able to receive the information you need to help them.



Dornsife Scholar #2 replied



dont you think its more important to have knowlege then empathy in the medical field?



Dornsife Scholar #3 replied



Ugh, why sooooo many mistakes in this post?? Check your grammar and spelling, PLEASE!!



Chat Do's and Don'ts

**BAD spelling,
unforgiving,
opinionated,
harsh tone**





Nicole Roberts (Community Manager)

@nbriodyroberts

posted an update



What is one thing you learned today from your project that you think might impact how you will approach a similar situation in your future professional career?



Dornsife Scholar replied



I learned that it is important to be empathetic and build trust with your patients. It can be intimidating for a patient to speak with a medical professional to begin with – by building trust, you will be better able to receive the information you need to help them.



Dornsife Scholar #2 replied



That's a great point! I learned that it's important to be well-prepared when speaking with a patient. The more well-versed you are in the medical issue your patient is having, the easier it is to discuss it with them in a concise and confident manner. This way, you can lay solutions on the table more quickly. I have noticed that this approach tends to calm the nerves of patients who may find it scary or intimidating to speak with a medical professional.



Chat Do's and Don'ts

GOOD spelling, tone





Nicole Roberts (Community Manager)
@nabriodyroberts

posted an update 5 minutes ago



What is one fun thing you did this week while sightseeing in the area you're staying in?



Dornsife Scholar replied



I went with a couple friends to Victoria Falls!
Victoria Falls is a waterfall in southern Africa on the Zambezi River at the border between Zambia and Zimbabwe.
European settlement of the Victoria Falls area started around 1900 in response to the desire of Cecil Rhodes' British South Africa Company for mineral rights and imperial rule north of the Zambezi, and the exploitation of other natural resources such as timber forests north-east of the falls, and ivory and animal skins. Before 1905, the river was crossed above the falls at the Old Drift, by dugout canoe or a barge towed across with a steel cable. Rhodes' vision of a Cape-Cairo railway drove plans for the first bridge across the Zambezi. He insisted it be built where the spray from the falls would fall on passing trains, so the site at the Second Gorge was chosen. See the main article Victoria Falls Bridge for details. From 1905 the railway offered accessible travel from as far as the Cape in the south and from 1909, as far as the Belgian Congo in the north. In 1904 the Victoria Falls Hotel was opened to accommodate visitors arriving on the new railway. The falls became an increasingly popular attraction during British colonial rule of Northern Rhodesia (Zambia) and Southern Rhodesia (Zimbabwe), with the town of Victoria Falls becoming the main tourist centre.

In 1964, Northern Rhodesia became the independent state of Zambia. The following year, Rhodesia unilaterally declared independence. This was not recognized by Zambia, the United Kingdom nor the vast majority of states and led to United Nations-mandated sanctions. In response to the emerging crisis, in 1966 Zambia restricted or stopped border crossings; it did not re-open the border completely until 1980. Guerrilla warfare arose on the southern side of the Zambezi from 1972: the Rhodesian Bush War. Visitor numbers began to drop, particularly on the Rhodesian side. The war affected Zambia through military incursions, causing the latter to impose security measures including the stationing of soldiers to restrict access to the gorges and some parts of the falls.

Zimbabwe's internationally recognised independence in 1980 brought comparative peace, and the 1980s witnessed renewed levels of tourism and the development of the region as a centre for adventure sports. Activities that gained popularity in the area include whitewater rafting in the gorges, bungee jumping from the bridge, game fishing, horse riding, kayaking, and flights over the falls.

Chat Do's and Don'ts

BAD
Not brief





Nicole Roberts
(Community Manager)
@nbriodyroberts

posted an update



What is one fun thing you did this week while sightseeing in the area you're staying in?



Dornsife Scholar replied



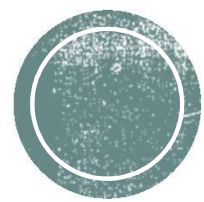
I went with a couple friends to Victoria Falls... absolutely breathtaking!! It's a waterfall in southern Africa on the Zambezi River at the border between Zambia and Zimbabwe. This is a photo of my friends and I at the falls!



Chat Do's and Don'ts

GOOD
Brief, Creative





dornsife2019!

WEBSITE

www.mchapp.org